

General Description

VEHICLE DYNAMICS CONTROL (VDC)

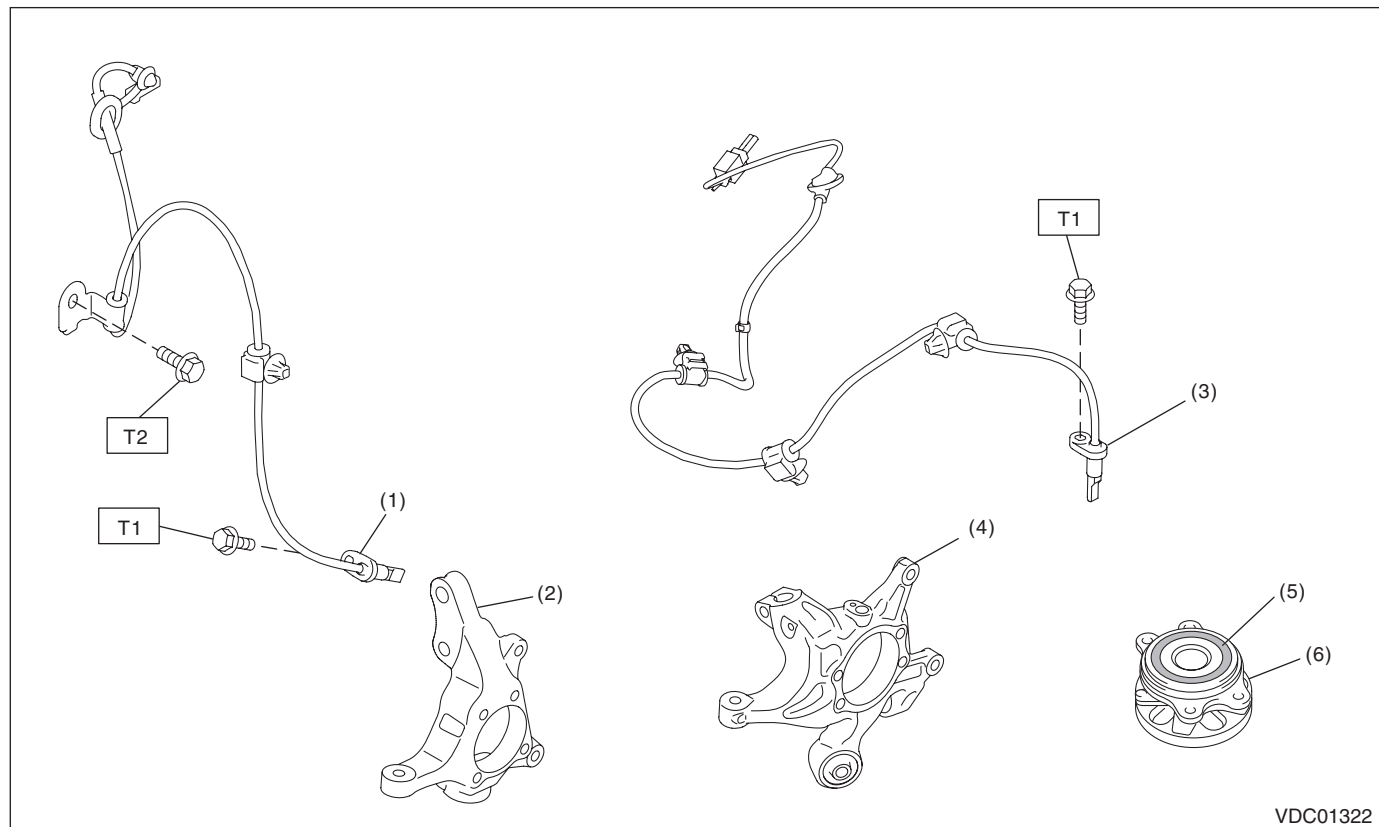
1. General Description

A: SPECIFICATION

Item				Specification or identification
ABS wheel speed sensor	ABS wheel speed sensor gap (for reference)	Front		0.77 — 1.43 mm (0.030 — 0.056 in)
		Rear		0.44 — 1.76 mm (0.017 — 0.069 in)
	Identifications of harness (symbol)	Front	RH	G1
			LH	G2
		Rear	RH	G3
			LH	G4
VDCCM&H/U identification				P1

B: COMPONENT

1. ABS WHEEL SPEED SENSOR



VDC01322

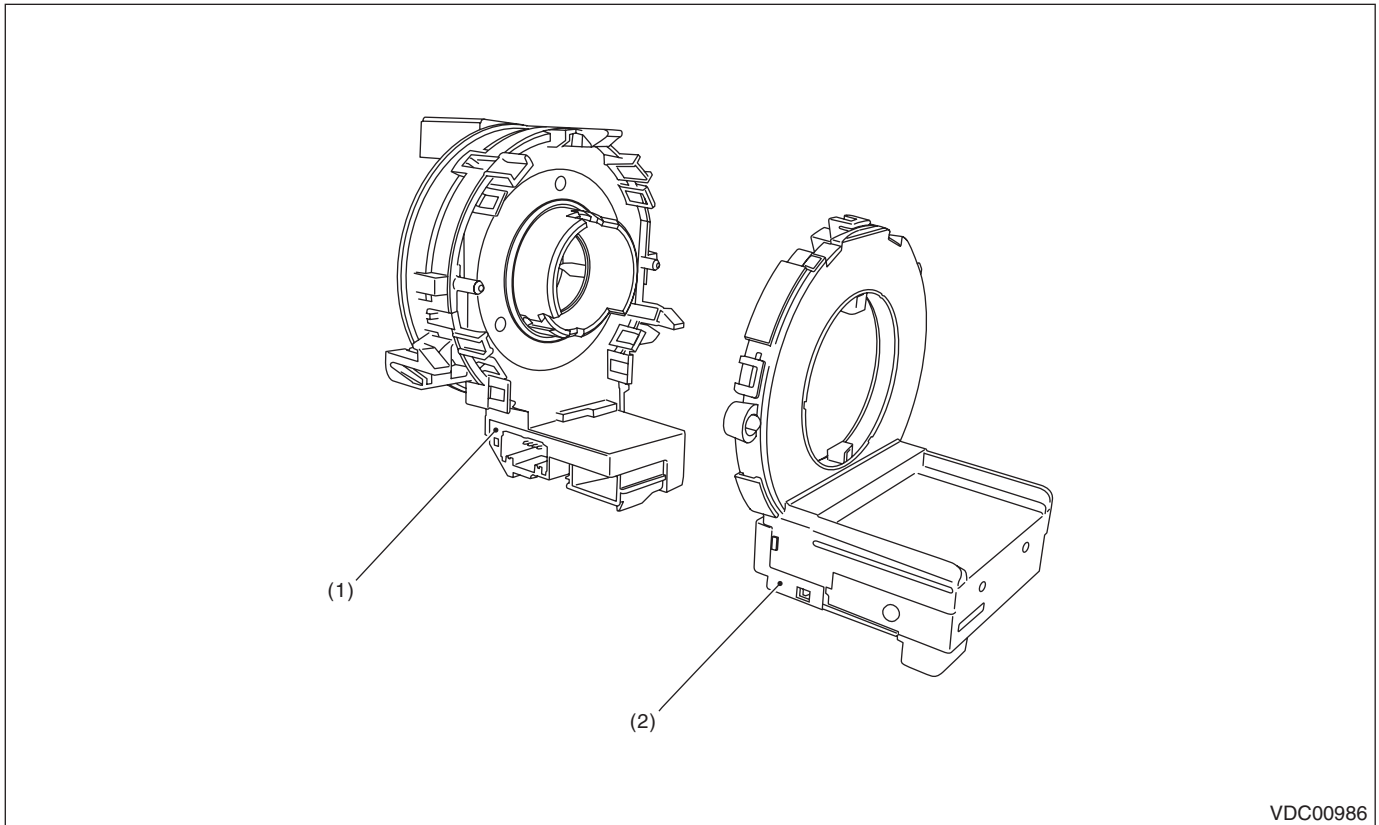
- | | |
|----------------------------------|------------------------------|
| (1) Front ABS wheel speed sensor | (4) Housing ASSY - rear axle |
| (2) Housing ASSY - front axle | (5) Magnetic encoder |
| (3) Rear ABS wheel speed sensor | (6) Hub unit COMPL |

Tightening torque: N·m (kgf·m, ft·lb)

T1: 7.5 (0.8, 5.5)

T2: 33 (3.4, 24.3)

2. STEERING ANGLE SENSOR



VDC00986

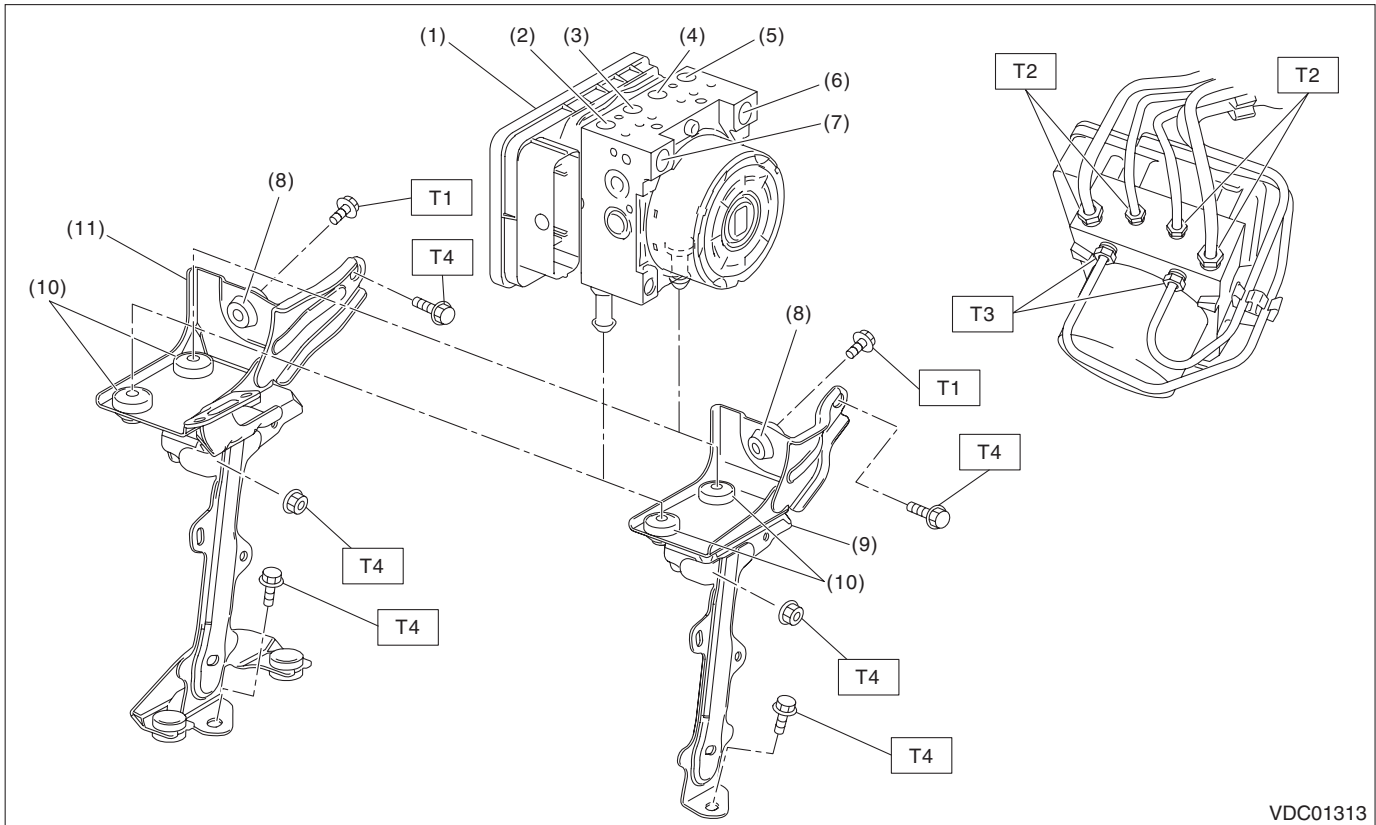
(1) Steering roll connector

(2) Steering angle sensor

General Description

VEHICLE DYNAMICS CONTROL (VDC)

3. VDC CONTROL MODULE & HYDRAULIC CONTROL UNIT (VDCCM&H/U)



- | | |
|---|--|
| (1) VDC control module and hydraulic control unit (VDCCM&H/U) | (7) Secondary inlet |
| (2) Rear RH outlet | (8) Damper - hydraulic unit |
| (3) Front LH outlet | (9) Bracket - hydraulic unit (STI model) |
| (4) Front RH outlet | (10) Spacer |
| (5) Rear LH outlet | (11) Bracket - hydraulic unit (except for STI model) |
| (6) Primary inlet | |

Tightening torque: N·m (kgf·m, ft·lb)

T1: 7.5 (0.8, 5.5)

T2: 15 (1.5, 11.1)

T3: 19 (1.9, 14.0)

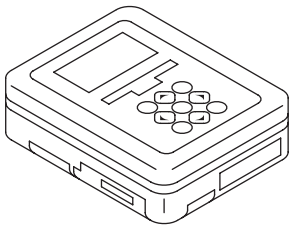
T4: 33 (3.4, 24.3)

C: CAUTION

- When performing any work, always wear work clothes, a work cap and protective shoes. Additionally, wear a helmet, protective goggles, etc. if necessary.
- Remove contamination including dirt and corrosion before removal, installation, disassembly or assembly.
- Keep the disassembled parts in order and protect them from dust and dirt.
- When performing a repair, identify the cause of trouble and avoid unnecessary removal, disassembly and replacement.
- Some vehicle components are extremely hot immediately after driving. Be wary of receiving burns from heated parts.
- Be sure to tighten fasteners including bolts and nuts to the specified torque.
- Always use the jack-up point when the shop jacks or rigid racks are used to support the vehicle.
- When removing, installing or replacing the VDCCM&H/U, VDCCM&H/U bracket, steering wheel or steering angle sensor (steering roll connector), perform "VDC sensor midpoint setting mode" of the VDC. <Ref. to VDC-16, VDC SENSOR MIDPOINT SETTING MODE, ADJUSTMENT, VDC Control Module and Hydraulic Control Unit (VDCCM&H/U).>

D: PREPARATION TOOL

1. SPECIAL TOOL

ILLUSTRATION	TOOL NUMBER	DESCRIPTION	REMARKS
 ST1B022XU0	1B022XU0	SUBARU SELECT MONITOR III KIT	Used for setting of each function and trouble-shooting for electrical system.

2. GENERAL TOOL

TOOL NAME	REMARKS
Circuit tester	Used for measuring resistance and voltage.
Pressure gauge	Used for measuring oil pressure.
Oscilloscope	Used for measuring the sensor.
Steering wheel puller	Used for removing the steering wheel.